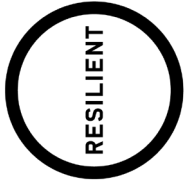


GREATER MIAMI
AND THE BEACHES



MIAMI BEACH



100 RESILIENT CITIES



WHO IS GREATER MIAMI AND THE BEACHES?

Greater Miami & the Beaches is a unique collaboration among Miami Dade County, City of Miami Beach and City of Miami created to respond to global trends major metropolis' face: urbanization, globalization and climate change. Last spring, after a highly competitive process, Greater Miami and the Beaches was selected to join 100 Resilient Cities.

WHO IS 100 RESILIENT CITIES (100RC)?

100 Resilient Cities, also referred to as 100RC, is an organization pioneered by the Rockefeller Foundation. 100RC is dedicated to helping cities around the world become more resilient to the physical, social and economic challenges that are a growing part of the 21st century. 100RC will provide expert consultant support to develop a Resilience Strategy for Greater Miami and the Beaches. 100RC Cities will have access to \$200 million in solutions through consultant services over the next two-years as well as access to the network of peer cities.

WHAT IS URBAN RESILIENCE?

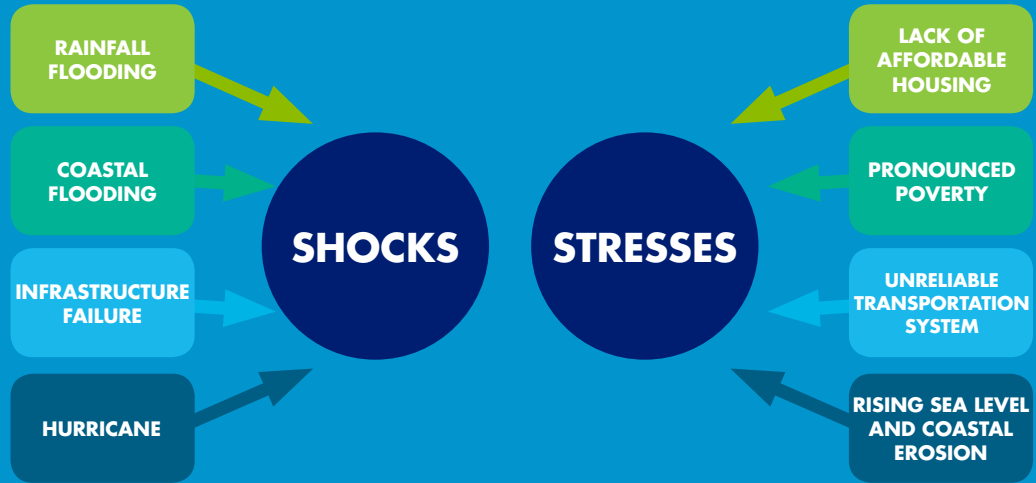
Urban resilience is the capacity of individuals, communities, institutions, businesses and systems within a city to survive, adapt, and grow no matter what kinds of chronic stresses and acute shocks they experience.

Resilience planning is about making a city better, in both good times and bad, for the benefit of all its residents and visitors, particularly the poor and vulnerable.

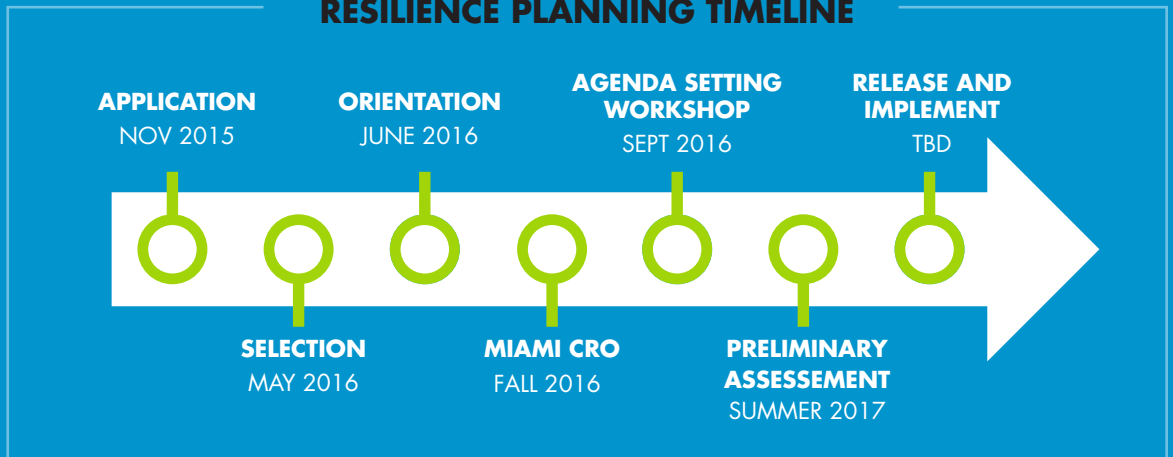


WHAT ARE SHOCKS AND STRESSES?

The Resilience Strategy will be designed to address Greater Miami and the Beach’s key shocks and stresses. Acute shocks are sudden and sharp events that threaten a city. Chronic stresses weaken the fabric of a city on a day-to-day or cyclical basis.



RESILIENCE PLANNING TIMELINE



CONTACT THE CHIEF RESILIENCE OFFICERS

- James Murley is the Chief Resilience Officer for Miami-Dade County:
murleyj@miamidade.gov
- Susanne M. Torriente is the Chief Resilience Officer for the City of Miami Beach:
SusanneTorriente@miamibeachfl.gov
- Jane Gilbert is the Chief Resilience Officer for the City of Miami:
JaGilbert@miamigov.com

FOR MORE INFORMATION PLEASE VISIT: WWW.100RESILIENTCITIES.ORG

